



The Oh-So-Late Rogaine

WARA USD 12 Hour
15 & 16 February 2014

LEGEND

SCALE 1:50,000, 5 metre contour interval



- Building
- Control
- Contours
- Dams
- Hash House
- Magnetic North Line
- Out of Bounds
- Pipeline
- Railway, Abandoned
- Road, Bitumen
- Road, Major Gravel
- Road, Minor Gravel
- Watercourse
- Water Drop
- Patrolled road

SETTERS AND VETTERS

Paul Szijarto Jim Langford

SPECIAL THANKS TO THE FARMERS

Andrew & Justine Chitty (also Tony & Jade)
 D Cowcher
 P & G Earnshaw
 David Earnshaw
 Andrew Higham
 Howard & Ann Higham
 Glen & S Ford
 Des & Jennine Lavender
 Hal & Shelley Klug
 W & K Newton-Wordsworth
 Horace & S Panizza
 Peter & S Paterson
 Rod & W & E Petchell
 David & Helen Phelps
 Bruce Taylor
 Graham Prowse
 Les Wilson
 Paul Milne
 David Wright & Poppy



Department of
Sport and Recreation



Emergency contact

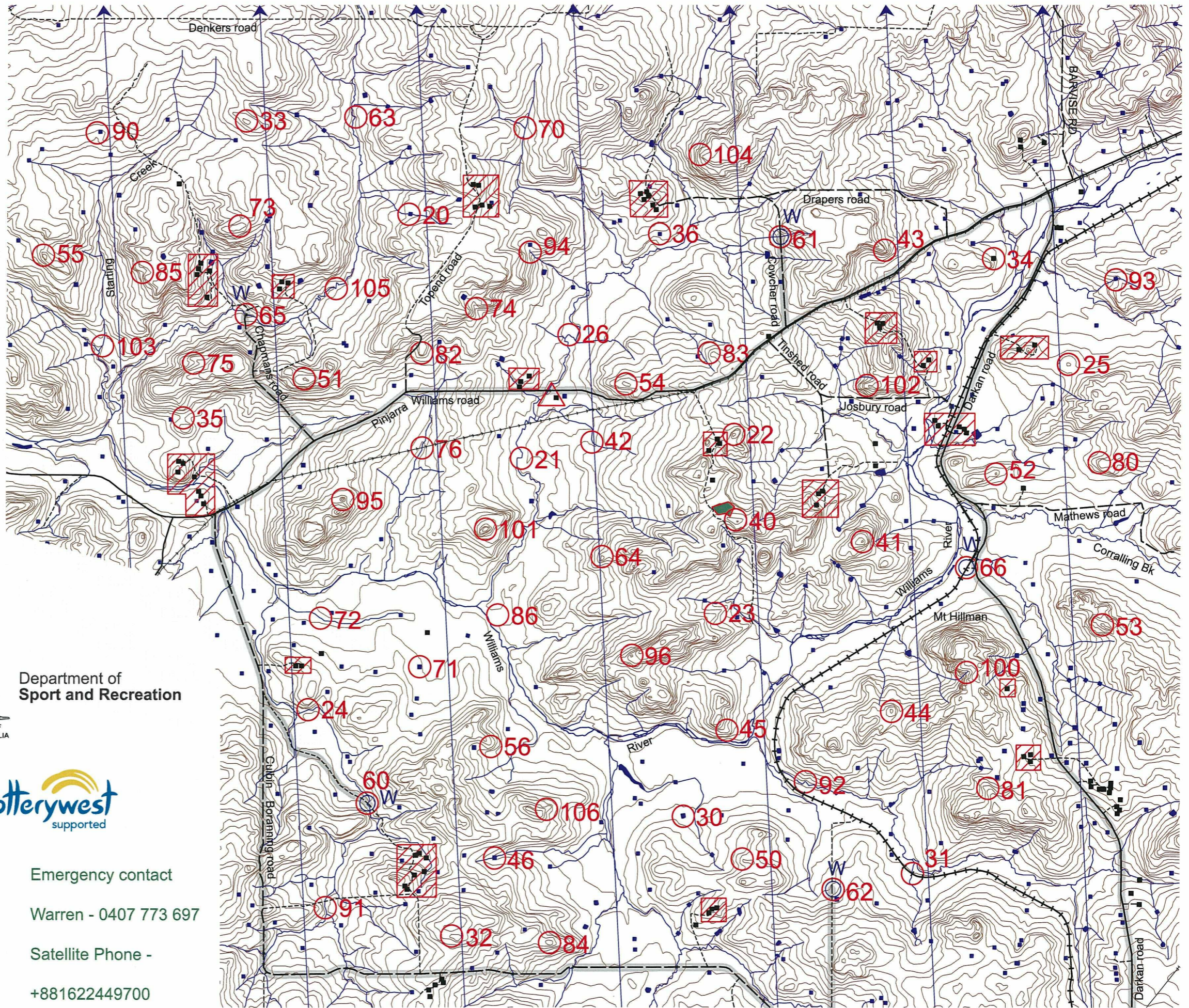
Warren - 0407 773 697

Satellite Phone -

+881622449700

Possession of this map does not give right of entry to this area.

This map was produced using OCAD. Data supplied by Landgate and used under copy licence 393/93.



The Oh-So-Late Rogaine - 15 & 16 February 2014

No	Description	Points
20	The dam, west side	20
21	The eastern watercourse bend	20
22	The knoll	20
23	The spur	20
24	The watercourse	20
25	The knoll, on a fence	20
26	The watercourse bend	20
30	The dam, north side	30
31	The disused railway/watercourse junction	30
32	The knoll, southern edge	30
33	The knoll	30
34	The ruined building	30
35	The saddle, on a fence	30
36	The dam, then 50m @ 155 degrees	30
40	The knoll, next to a tank	40
41	The knoll	40
42	The watercourse	40
43	The spur	40
44	The knoll	40
45	The spur	40
46	The dam, south side	40
50	The spur	50
51	The knoll, broad, NW end	50
52	The knoll	50
53	The knoll	50
54	The knoll	50
55	The knoll	50
56	The spur	50

No	Description	Points
60	The track/watercourse junction (water)	60
61	The track/watercourse junction (water)	60
62	The ruined windmill (water)	60
63	The watercourse bend	60
64	The knoll	60
65	The track/watercourse junction (water)	60
66	The track/old rail formation junction (water)	60
70	The watercourse junction	70
71	The dam, then 70m @ 50 degrees	70
72	The watercourse	70
73	The knoll	70
74	The gully	70
75	The gully, broad	70
76	The water pipe/watercourse crossing	70
80	The spur	80
81	The spur	80
82	The spur	80
83	The spur	80
84	The knoll	80
85	The gully	80
86	A dry lake bed, south side	80
90	The dam, south side	90
91	The watercourse	90
92	The watercourse bend	90
93	The dam, south side	90
94	The watercourse	90
95	The knoll	90
96	The knoll	90

No	Description	Points
100	The gully	100
101	The knoll	100
102	The spur	100
103	Base of a waterfall	100
104	The spur	100
105	The southern watercourse bend	100
106	The spur	100

Event Information	
Start 8:00pm Saturday	
Finish 8:00am Sunday	
Late penalty: 10 points per minute or part minute	
Sunset: 7:07pm	
Sunrise: 5:53am	
Moonrise: 7:00pm	
Moonset: 6:52am	
Controls used: 63	
Total points: 3780	
Water drops: 60,61,62.65, 66	
If a team member becomes sick or injured, please make your way to a water drop or a patrolled road which are indicated on the map.	
There are some "live" electric fences	
Please stay clear of all houses	